

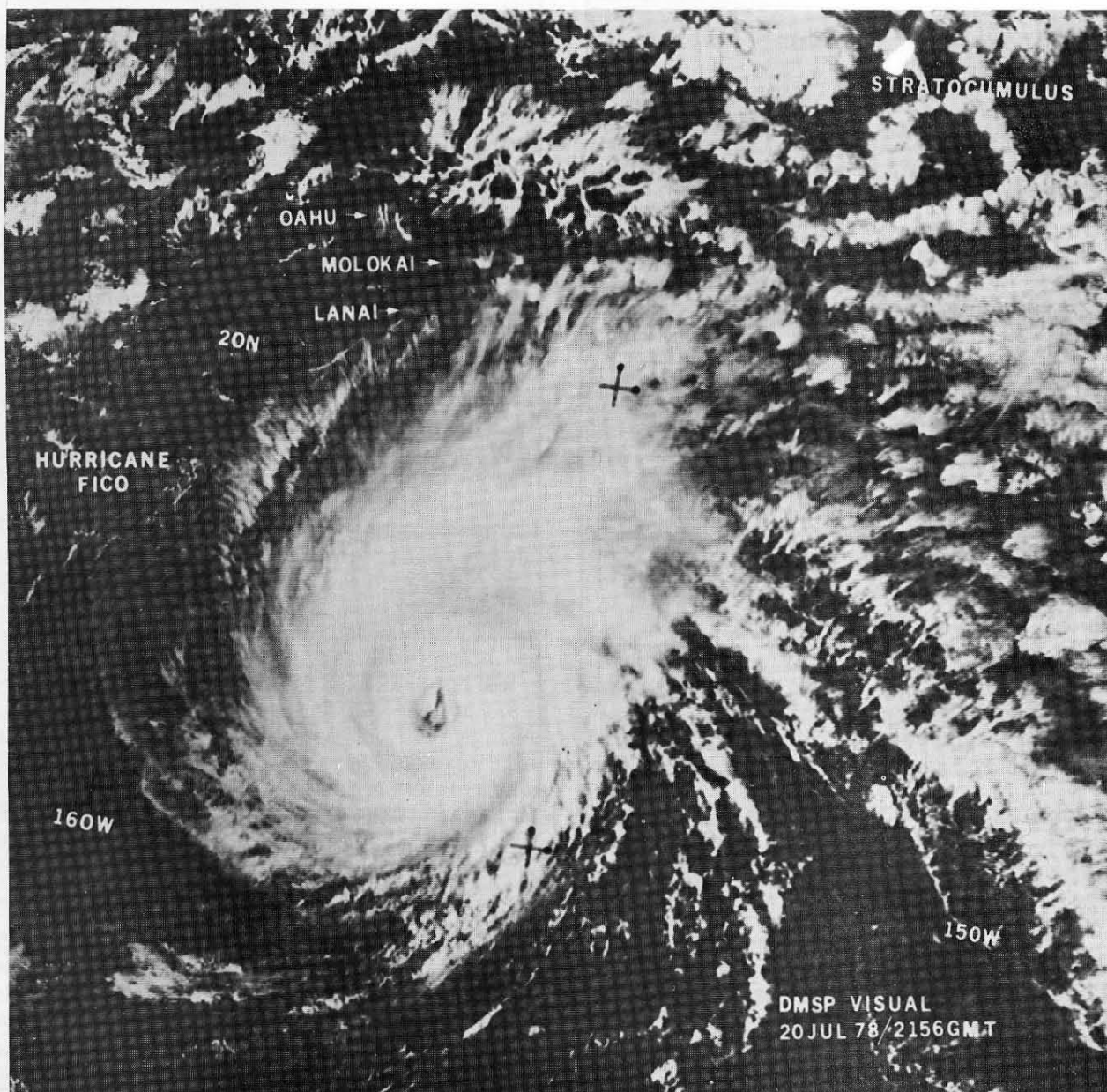
"FICO"

Major Kenneth F. Persin
Staff Sergeant Les Taylor

Headquarters Air Force
Global Weather Central
Offutt AFB, Nebraska

Hurricane Fico as viewed by the Defense Meteorological Satellite Program (DMSP) satellite passing to the south of Hawaii on 20 July 78, 2156 GMT. In this 1.5NM visual imagery, Oahu is plainly visible, with Lanai and Molokai at the leading edge of the cirrus outflow, and Hawaii and Maui under the cirrus shield. A USAF reconnaissance report at 2355 GMT, 20 July 78, reported center winds of 100 kts with gusts to 125 kts. The

Honolulu NWS office advisory issued at 0000 GMT with movement WNW at 10 kts. The extension of the Intertropical Convergence Zone (ITCZ) is at the bottom of the picture. Sun-glint (sunlight reflected by the water) locates the high pressure ridge preceding the storm. Satellite data is extremely important in monitoring the movement and intensity of such potentially dangerous storms as they pass through data sparse regions.



FICO