

Satellite

UNUSUAL FORMATION OF FRANCES

by Henry W. Brandli

Chairman, NWA Satellite Meteorology Committee

The birth of Eastern Atlantic tropical storms usually takes place off the west coast of Africa near the I.T.C.Z.. When these new born disturbances are more than 1000 miles from the dark continent's coast, they can reach hurricane strength.

So the rapid formation of Hurricane Frances so close to African coast on the 8th of September 1980 was somewhat of a surprise (Figure 1). Winds around the storm were 85 knots gusting to 105 knots.

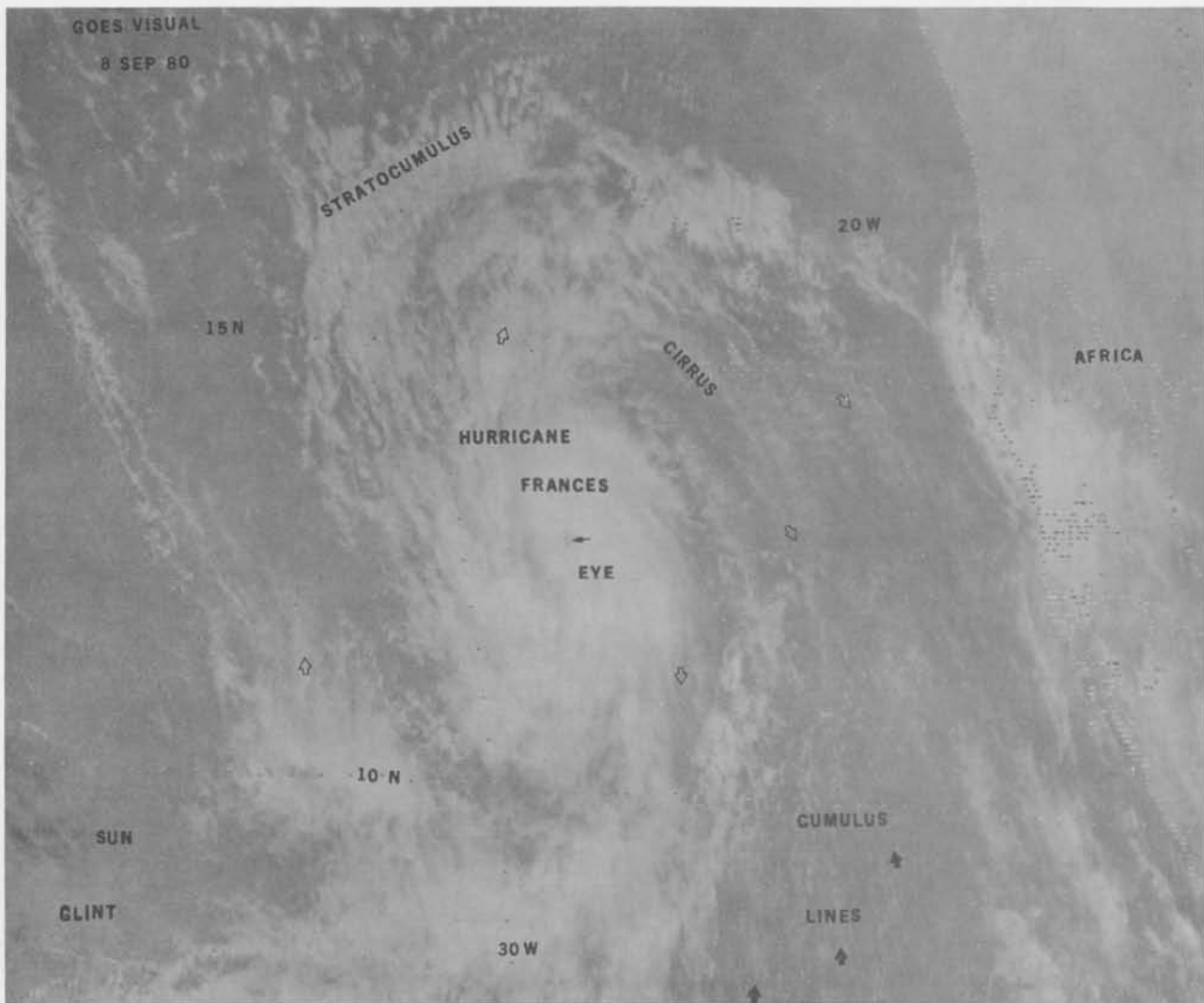


Fig. 1 Goes Visual 8 Sept. 80 of Hurricane Frances (◊) low level flow (◊) high level flow.