

Satellite

ACTIVE HEMISPHERES

By
Henry W. Brandli (1)

Simultaneous tropical cyclones North and South of the equator are not rare.

Figure 1 GMS 22,000 mile high infrared image shows that fact; tropical storm Ed east of Luzon, tropical depression 27-80 east of Sri Lanka, and hurricanes Carol

and Felix northwest of Australia on 16 Dec 1980.

The 200 MB wind flow (plumbs and bands) is noted by hollow arrows.

1. Chairman, Satellite Meteorology Committee of the NWA.

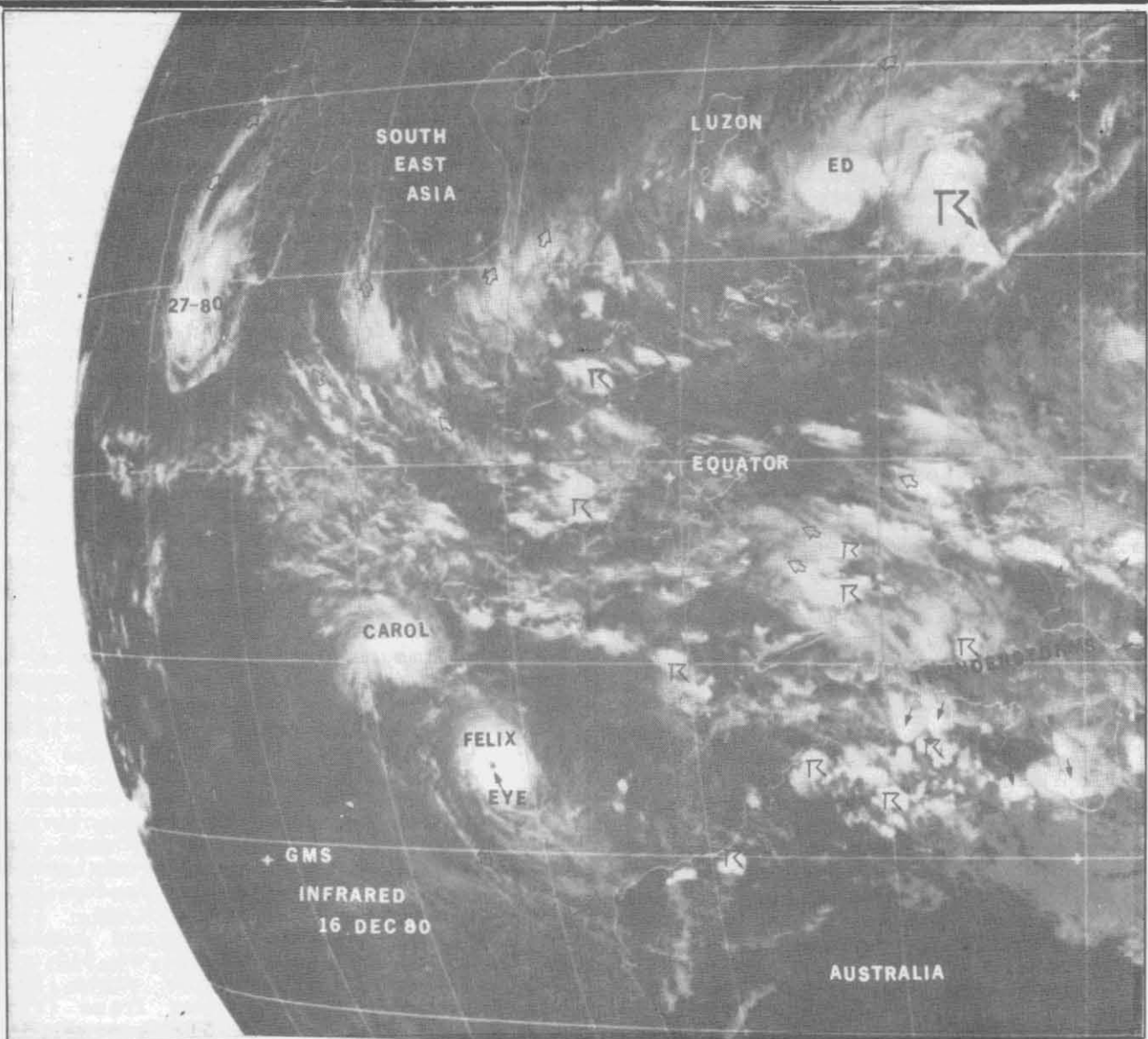


Figure 1. GMS Infrared image 16 December 1980; four tropical cyclones indicated.