

Satellite

WHAT A WINTER WEEKEND!

Henry W. Brandli
 Chairman of the NWA Satellite Meteorology Committee

The weekend of 21, 22 January 1984 brought record winter low temperatures to much of the Eastern two thirds of the nation.

The record lows for cities on Saturday and Sunday are shown in Figures 2 and 3 along with the GOES East analyzed U.S. sectors (IR visual).

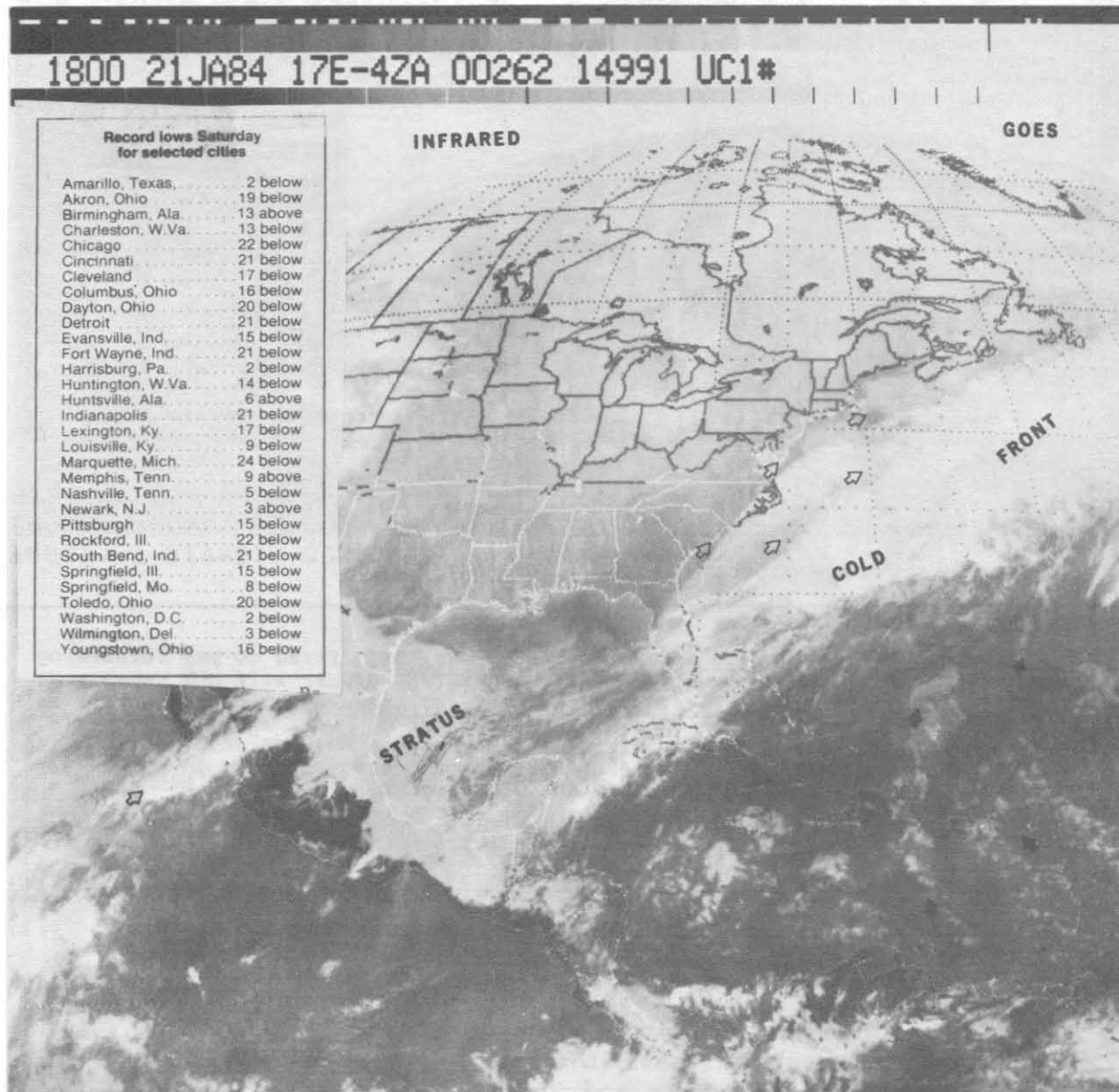


Figure 2. IR satellite photo, 18Z January 21, 1984.

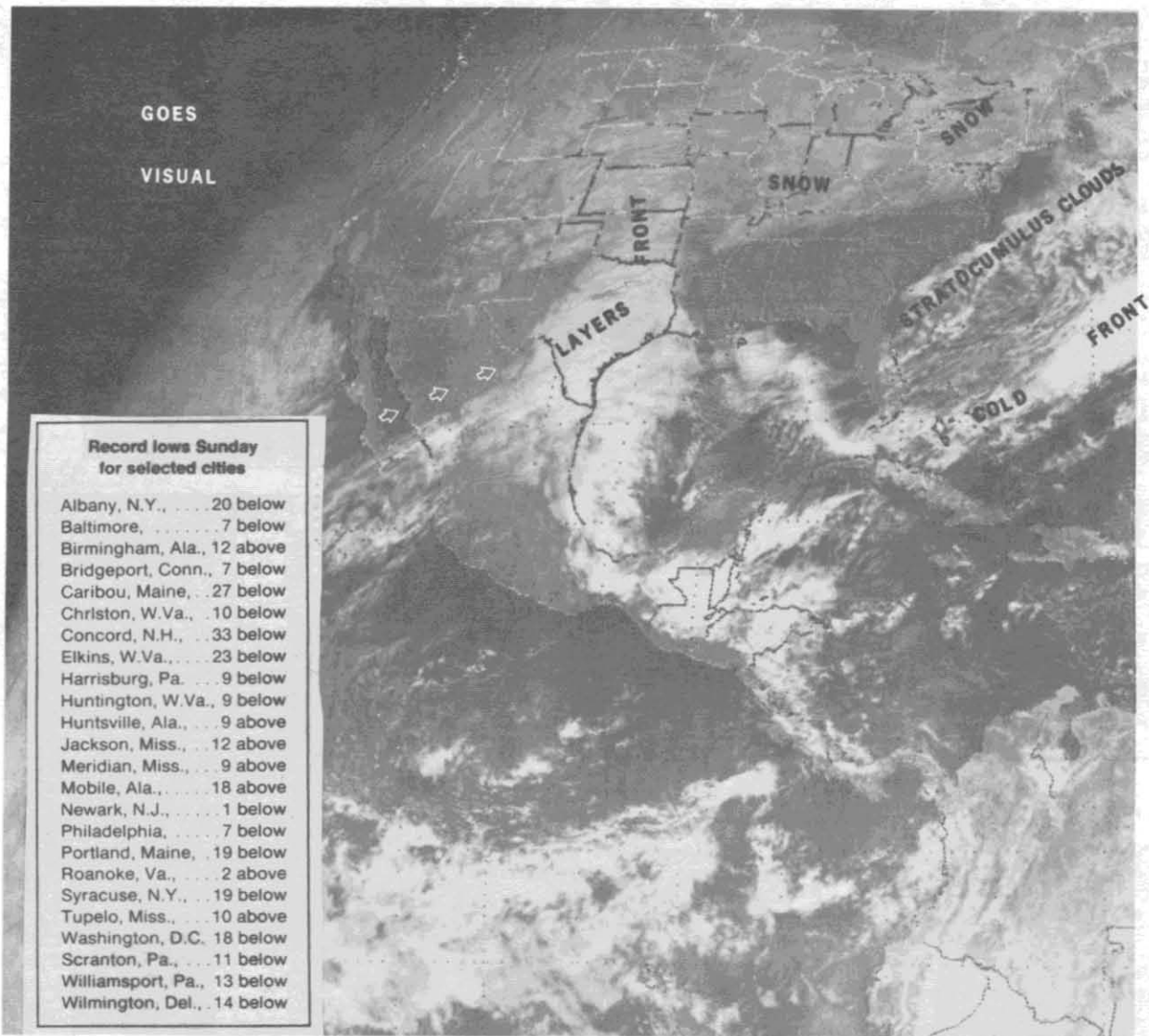


Figure 3. Visual satellite photo, 1630Z January 22, 1984.

Moving?

If you have moved and not notified us, or offered to pay forwarding costs for magazines, the NATIONAL WEATHER DIGEST will not reach you. Additionally, we must pay the cost for returned Digests as well as remailing them out again. To save a lot of work and inconvenience, please notify us immediately of any change of address, and send it to the National Weather Association, 4400 Stamp Road, Room 404, Temple Hills, MD 20748. Thank you very much.

OLD ADDRESS:

NEW ADDRESS:

