

Satellite

LATEST RUSSIAN WEATHER SATELLITE IMAGERY

by Hank W. Brandli
 Chairman, NWA
 Satellite Meteorology Committee

At the end of December 1985, the Soviet Union launched their latest meteor (2-13) automatic picture transmission (APT) (137.3 MHZ) meteorological spacecraft.

With a fixed antenna (Fig. 1) on my roof connected via a receiver into my Harris Laserfax, I have been processing visual meteor imagery (Fig. 2) every day. No infrared data has been transmitted day or night.

Fig. 3 is an ephemeris printout of meteor Z-13 (object No 16408) for February 16, 1986. Compared to NOAA's APT imagery, the meteor products are a distant second.

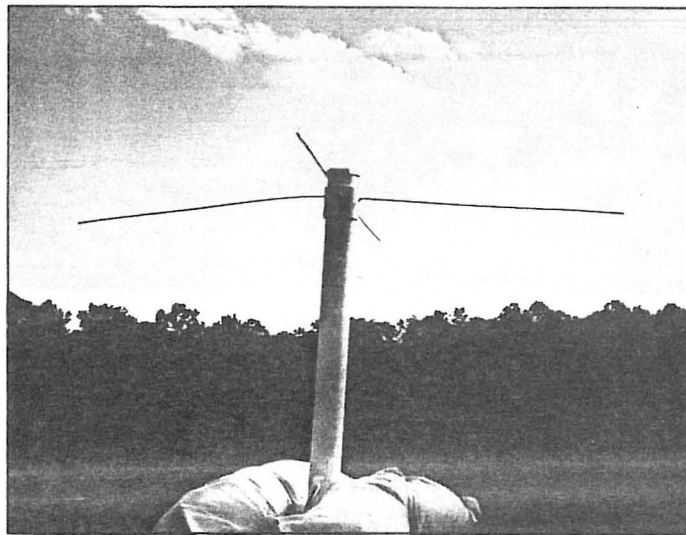


Figure 1. APT antenna (PVC pipe and welding rods) designed by Holly Johnson.

NWA Corporate Members

ACCU-WEATHER, INC.*
 ALDEN ELECTRONICS, INC.*
 AUDICHRON*
 DON TOOLEY & ASSOCIATES*
 IMET*
 INTERCON WEATHER CONSULTANTS, INC.*
 KAVOURAS, INC.*
 MOUNTAIN STATES WEATHER SERVICES*
 TEXAS A&M UNIVERSITY*
 THE WEATHER CHANNEL*

WEATHER CENTRAL, INC.*
 WEATHER CORPORATION OF AMERICA*
 WSI CORPORATION*
 ZEPHYR WEATHERTRANS, INC.*
 ENVIRONMENTAL SATELLITE DATA, INC.
 GLOBAL WEATHER DYNAMICS, INC.
 PLANNING RESEARCH CORPORATION
 RUTGERS STATE UNIVERSITY
 SATELLITE INFORMATION SERVICES CORP.

*Charter Member

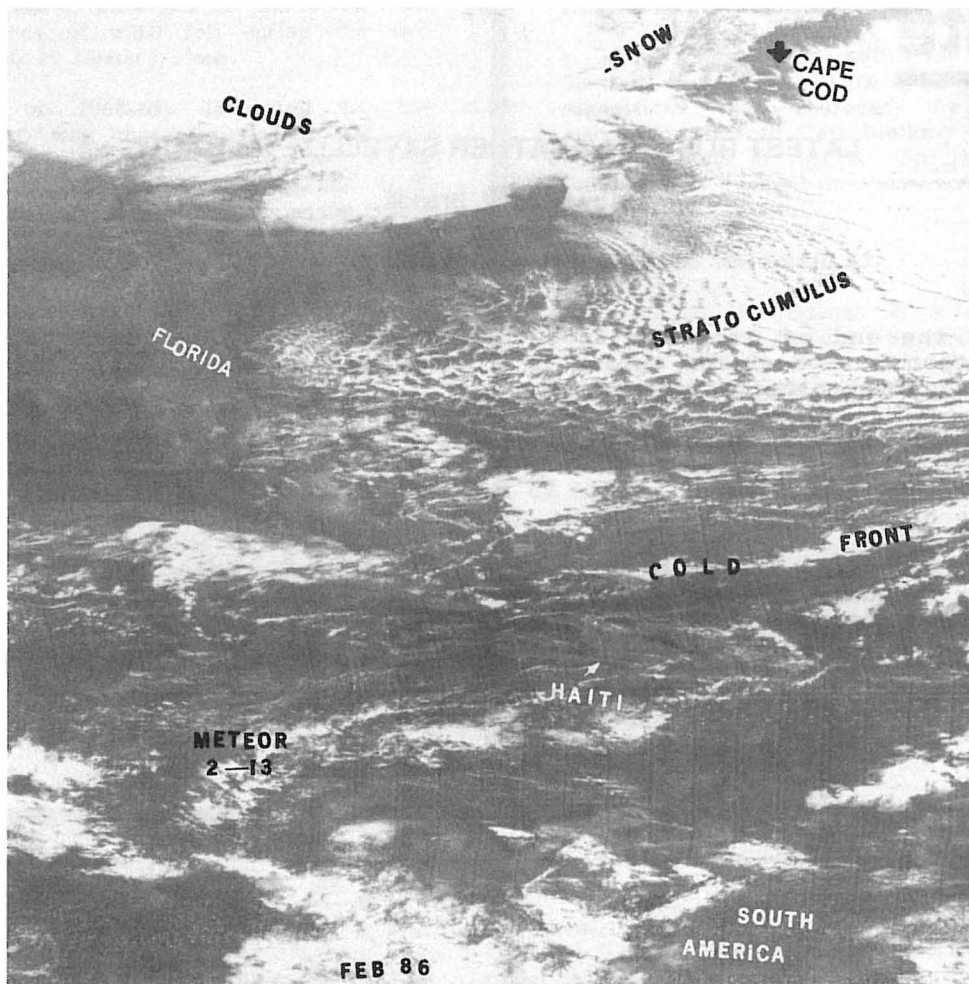


Figure 2. Meteor 2-13 visual APT imagery on February 16, 1986 1405 GMT.

HR	MN	SEC	RANGE(KM)	AZ(DEG)	EI(DEG)	REV	GEOD. LAT. (DEG)	EAST LONG. (DEG)	HEIGHT(KM)
01	20	.0	3113.248	109.523	4.886	719.0	17.877	304.204	953.8
MAX EL = 4.9 AT 0120/ .0 1 LOOKS									
03	00	.0	3084.407	105.463	5.193	720.3	3.681	277.152	956.8
03	10	.0	1486.672	2.731	34.872	720.1	38.072	280.018	952.5
MAX EL = 34.9 AT 0310/ .0 2 LOOKS CW ACD									
04	50	.0	3074.689	265.732	5.291	721.0	23.931	252.351	953.0
MAX EL = 5.3 AT 0450/ .0 1 LOOKS									
12	20	.0	3363.391	58.547	2.195	725.3	39.390	309.837	945.5
MAX EL = 2.2 AT 1220/ .0 1 LOOKS									
14	00	.0	3098.216	1.834	4.879	726.3	53.435	280.736	947.7
14	10	.0	1607.446	146.775	30.345	726.4	19.159	285.748	945.1
MAX EL = 30.3 AT 1410/ .0 2 LOOKS CW DCD									
15	50	.0	2419.377	290.298	13.294	727.4	33.352	258.299	945.0
MAX EL = 13.3 AT 1550/ .0 1 LOOKS									

Figure 3. Meteor 2-13 ephemeris February 16, 1986.