

SATELLITE

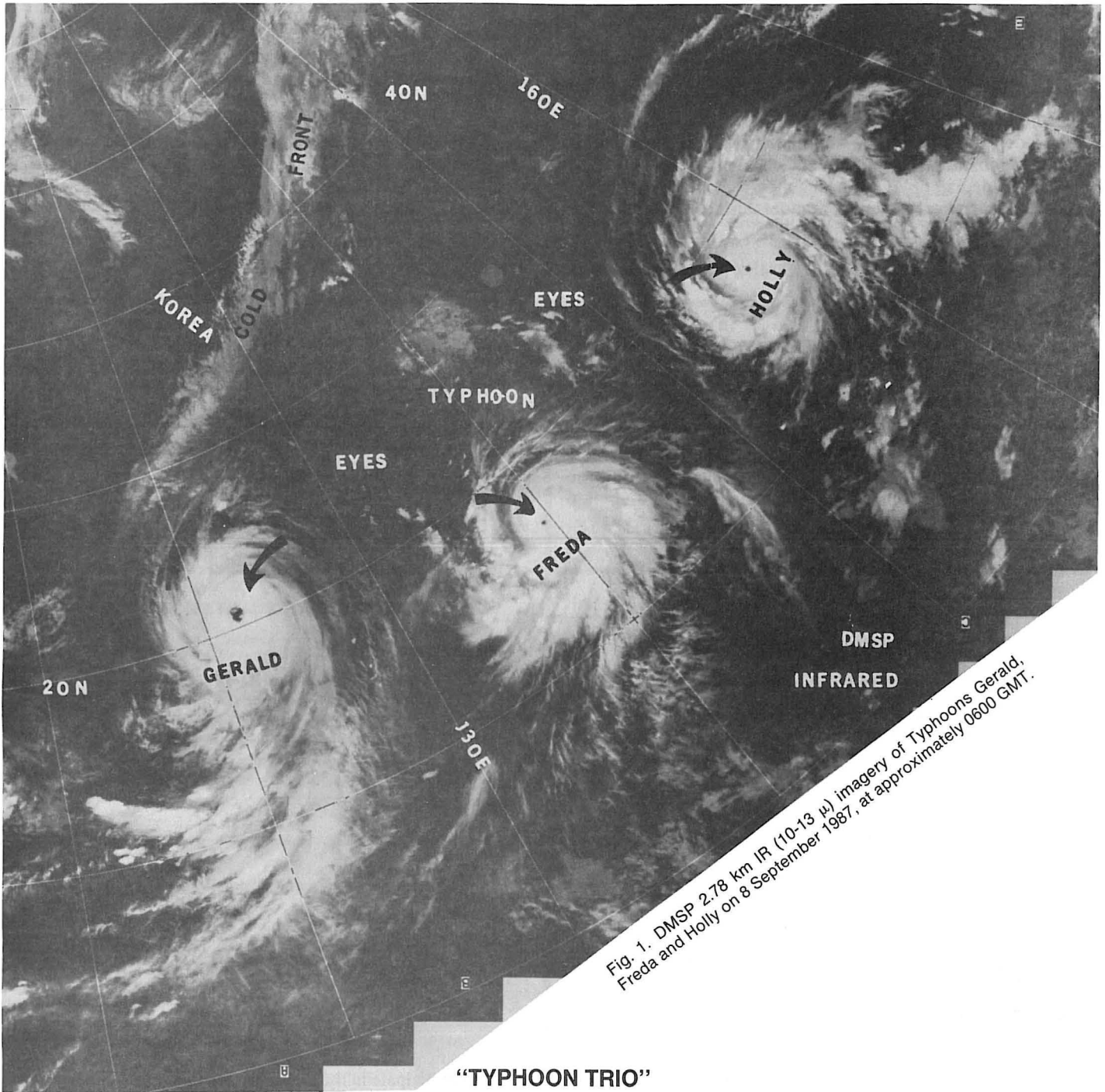


Fig. 1. DMSP 2.78 km IR (10-13 μ) imagery of Typhoons Gerald, Freda and Holly on 8 September 1987, at approximately 0600 GMT.

“TYPHOON TRIO”

Henry W. Brandli (1)
Anita Dye (2)

As frequently occurs in the western Pacific, an active monsoon trough spawned a multiple tropical cyclone outbreak. On 8 September 1987 at approximately 0600 GMT, the Defense Meteorological Satellite (DMSP) captured three typhoons on its 2.78 km infrared sensor (Fig. 1) from an altitude of 450 nm. The maximum winds near the typhoon centers exceeded 100 kts at image time. Note the unusually large eye of Gerald, a typhoon which caused much damage in Taiwan and China

and killed over 120 people. Freda and Holly caused little damage and no loss of human life.

NOTES AND REFERENCES

1. Henry W. Brandli is Chairman, NWA Satellite Meteorology Committee.
2. Anita Dye is USAF Captain, Det 11, 2WS, Patrick AFB, FL.