

EASTERN NORTH PACIFIC HURRICANES 1994

Hank Brandli

Satellite Meteorologist
Melbourne, Florida

During the summer of 1994, several strong hurricanes moved from east to west, south of the Hawaiian Islands, creating extraordinary wave conditions for surfers. These hurricanes were called: "Emilia," "Gilma," "John" and "Kristy."

Below are prints of hurricane "Emilia" from the author's personal computer.

Figure 1 is a 2200 local time 20 July 1994, nighttime visual, full moonlight image of hurricane "Emilia" well south of the Hawaiian Islands. The image was taken by a sun-synchronous, polar-orbiting, United States Defense Meteorological Satellite

Program (DMSP) spacecraft from 450 nautical miles. The large hurricane eye is almost the size of the Island of Oahu. On Oahu, the city lights of Honolulu and Waikiki Beach are visible.

Figure 2 is the simultaneous infrared image of "Emilia," detailing the large eye.

Coincidentally, twenty-five years previous, on the 20th of July 1969, the *Apollo 11* Astronauts were on the Moon and ready to return to Earth for a landing in the Pacific between Hawaii and the Line Islands. If this year's weather situation had been an actuality then, it could have led to a catastrophe.

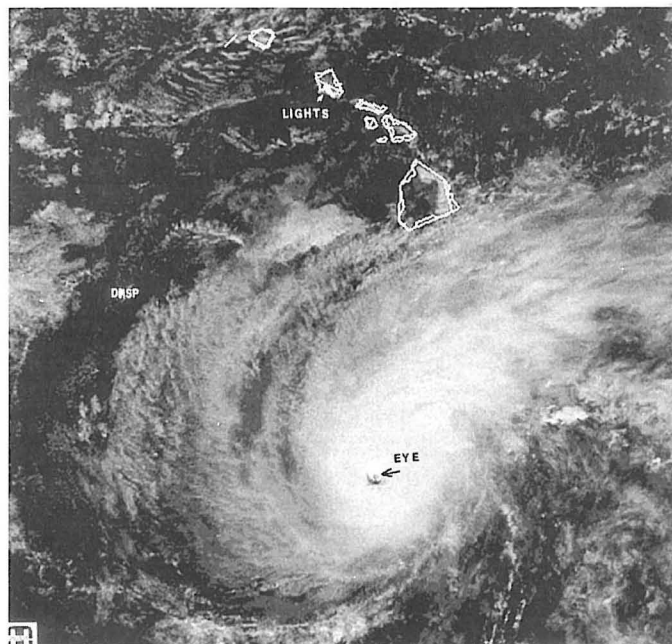


Fig. 1. DMSP nighttime visual imagery, 2200 local Hawaiian time, 20 July 1994 (0800 UTC 21 July 1994).

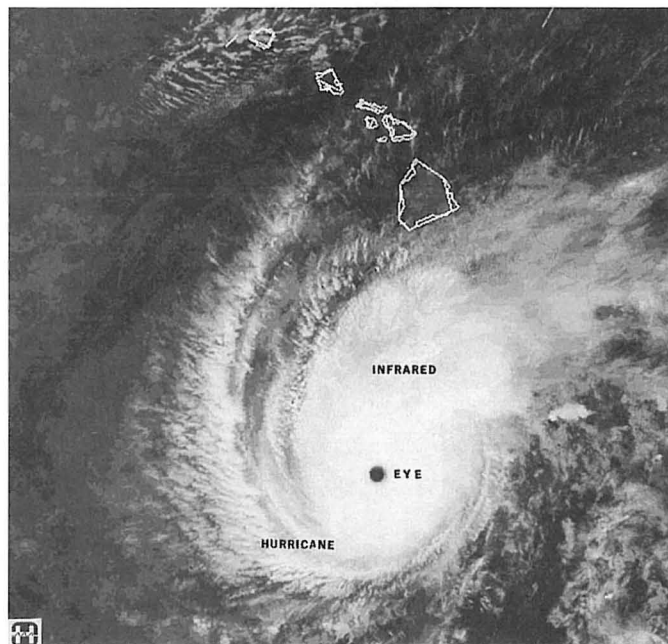


Fig. 2. DMSP infrared imagery for the same time as Fig. 1.