

PRESIDENT'S MESSAGE

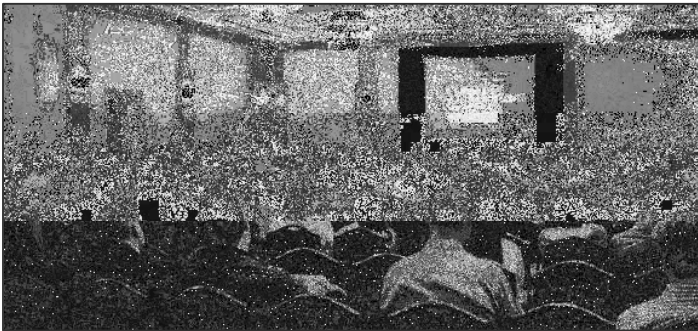
by Alan Gerard, president@nwas.org

As we move into September, our focus as an organization turns to our Annual Meeting. This year the meeting runs from 13-18 October at the Circus Circus Reno Resort in downtown Reno, NV. This edition of the Newsletter is dedicated to the annual meeting, and inside you will find the preliminary agenda as well as logistics and accommodation information. Please go to the NWA Web site www.nwas.org to preregister for the meeting.

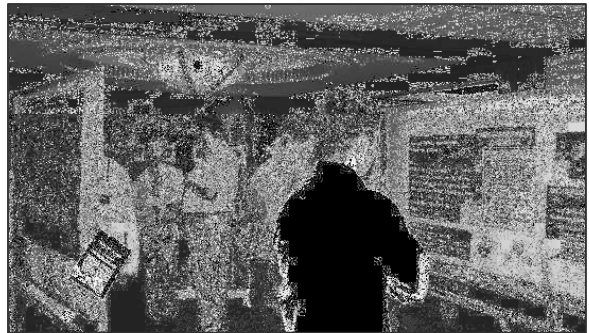
This year's meeting program is being developed by a team led by Randy Graham, the Science and Operations Officer at the National Weather Service Weather Forecast Office in Salt Lake City. Thanks to our members and friends in the meteorological community, we have had a tremendous response to our call for abstracts, with over 170 papers submitted from a broad spectrum of meteorological disciplines. This has enabled Randy and the rest of the Program Committee to put together an outstanding agenda, which I think fully supports the NWA's stated goal in our Strategic Plan to "Make Annual Meetings the premier forum for operational meteorology."

There are a few specific agenda items I would like to highlight. The first of these is the Broadcasters' Workshop on Sunday 14 October. The workshop chair, Councilor Bryan Karrick, and the rest of the Broadcast Committee have once again put together a day of talks and activities which will inform and entertain broadcasters and non-broadcasters alike. A collaboration between the Remote Sensing, Weather Analysis and Forecasting, and Education Committees has resulted in an special joint session on "New Radar and Satellite Applications to Improve Operational Weather Support" to be held on Tuesday and Wednesday. Of course, there will be plenty of fun activities as part of the week, including the traditional Golf Outing on Saturday the 13th, and our annual Awards Banquet on Wednesday the 17th.

For myself, this October will be my thirteenth consecutive Annual Meeting, and it seems like every year our conference gets a little bigger and a little better. I hope to see many of you in person in Reno this October.



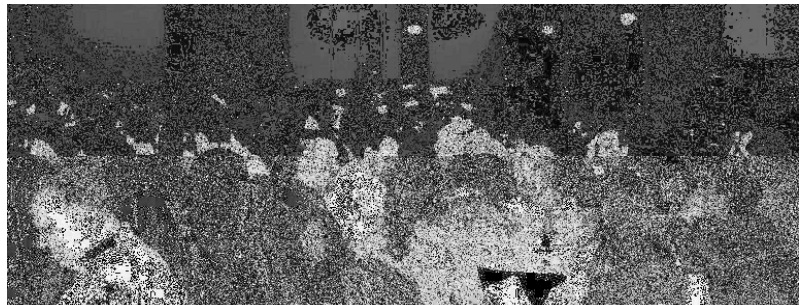
2006 Annual Meeting Lecture Hall



2006 Annual Meeting Poster Session



Dave Knapp and Alan Gerard at the 2006 Golf Outing



2006 Awards Luncheon

Revised NWA Broadcaster's Seal of Approval Procedures to Go into Effect on September 1, 2007

After a long and deliberate process spearheaded by the Broadcast Meteorology Committee, revised NWA Broadcaster's Seal of Approval procedures received final approval by the Council in May 2007 and will go into effect on September 1, 2007. However, those broadcasters who are recertifying in 2007 will proceed under the old guidelines. Although there are minor changes to the application requirements, the primary changes involve the recertification process. For the application process, tapes from three consecutive appearance days will be required. This is up from the old requirement of two consecutive days.

All recertification beginning January 1, 2008 will be done by CEUs, or Continuing Education Units. The recertification period will remain three years, and Sealholders must obtain 10 CEUs within each three-year period. CEUs can be accrued by attending conferences, presenting papers, completing appropriate college-level courses or online COMET courses, or completing a NWS familiarization program. The Appendix to the updated Seal Qualifications and Procedures document clearly states all the options Sealholders can use for recertification. The Broadcast Meteorology Committee encourages Sealholders to maximize their continuing education by combining the various options to obtain recertification. Please note there are limits on how many CEUs you can receive for some of the options.

Many recertifying broadcasters are able to attend annual NWA or AMS conferences, but others are not due to scheduling or financial conflicts. There are many other conferences and workshops that help further meteorological and technological knowledge, and these will be considered. The COMET program offers many online courses covering a wide range of subjects, and much positive feedback has been received from those utilizing this program. Each course is assigned a number for its level of difficulty, and CEUs are assigned appropriately. The National Weather Service (NWS) familiarization program remains a viable option and requirements have been formalized more than was the case in the old procedures. The NWA greatly appreciates any involvement of local NWS offices in our recertification program, but we cannot guarantee or assume their availability to participate.

Fees will increase by \$25 with the initial application increasing to \$175 and recertification increasing to \$75.

The new procedures are posted on the NWA Web site <http://www.nwas.org/seal.html> and are printed in National Weather Digest Volume 31, Number 1 that will be delivered to members in early September. Mike Goldberg, Chair of the Broadcast Meteorology Committee; Larry Rice, Seal Chair; or Jim Moore, Recertification Chair welcome any feedback, comments and/or suggestions. Their contact information is listed on the Web site mentioned above.

- Steve Harned, Executive Director

32nd ANNUAL MEETING AGENDA *Building the Bridge from Best Forecast to Best Response*

This preliminary agenda (as of 20 August 2007) is provided for members planning to attend and as crossfeed to all readers interested in knowing the variety of studies being done in the public, academic and private sectors. The agenda will be updated on the NWA Web site (www.nwas.org) as changes occur.

The 32nd Annual Meeting of the National Weather Association will be held **13-18 October 2007** at the **Circus Circus-Reno Hotel and Convention Center**, 500 North Sierra Street, Reno, Nevada. Attendees can register at the meeting or **preregister at a discount by 5 October 2007** using the form in the July NWA Newsletter or on the NWA Web site. Online preregistration with credit card is also available.

To all prospective attendees -- please **reserve a room** at the Circus Circus-Reno Hotel as soon as possible, but **before 12 September** to ensure you obtain the NWA discount rate (Fri & Sat: \$89/day; Sun-Thurs: \$55/day). Call 1-800-648-5010 and request the NWA 2007 group rate. Check in at the NWA Registration and Information desk in the Mandalay 1 meeting room in the Hotel's Convention Center as soon as possible after you arrive to obtain a nametag and printed program.

Saturday, 13 October 2007

0900 AM – 1000 PM NWA Registration/Information Desk will be open in the Circus Circus-Reno Hotel's Mandalay 1 meeting room.

1000 AM – 0700 PM Exhibits setup in Mandalay 2 and 3.

Sixth Annual Golf Classic: Betsy Kling (NWA Membership & Marketing Committee Chairperson) is organizing the sixth annual NWA golf outing for the enjoyment of members and guests and to raise funds for scholarships as she did so successfully the last five years. **The Golf Outing will begin with lunch at Noon at the D'Andrea Golf Club** in Sparks, Nevada (www.dandreaogolf.com). Several members have signed up already and Betsy wants to make sure EVERYONE knows they are most welcome to play golf even if not attending the Annual Meeting. **Total cost is \$95 for greens fees, golf cart, lunch and prizes.** Any sponsorships and profits from the event will benefit NWA educational scholarships. **Reserve your tee time** by contacting Betsy at BetsyKling@wkyc.com, or contact the NWA Office at (919) 845-1546 or exdir@nwas.org **by the first of October.**

Sunday, 14 October 2007

0730 AM – 1030 PM NWA Registration/Information Desk will be open in the Foyer of Mandalay Ballroom A.

0830 AM – 0500 PM Broadcaster Workshop in Mandalay Ballroom A

1000 AM – 0600 PM Exhibits open in Mandalay 2 and 3

0700 PM – 1030 PM TAPE SWAP 2007 in Mandalay Ballroom A

BROADCASTER WORKSHOP – (Mandalay Ballroom A) Presentations and workshops as shown below are for the continuing education of Television and Radio Weather Broadcasters and those in related fields, but **all individuals interested are most welcome to register, attend and participate.**

0830 AM Welcoming Remarks. NWA President, Alan E. Gerard, Meteorologist in Charge NOAA/NWS Forecast Office Jackson, MS.

0835 AM Opening Remarks. NWA Broadcast Meteorology Committee Chair, Mike Goldberg, WTVR-TV, Richmond, VA., and Broadcaster Workshop Program Chair, Bryan Karrick, (NWA Councilor) KCCI-TV, Des Moines, IA.

0845 AM The Biggest Little City - Broadcast Style, Duffy Atkins, KREN-TV, Reno, NV.

0900 AM Lightning Detection and Location: An Overview of Methods, Tim Oram (NWA IT Committee Chair), NOAA/NWS Spaceflight Meteorology Group, Johnson Space Center, TX.

0915 AM Lightning Kills – Play it Safe: Understanding One of Nature's Most Underrated Killers, John S. Jensenius, Jr., NOAA/NWS Gray, ME.

0930 AM Dispelling Lightning Myths, Michael P. Utley, struckbylightning.org, West Yarmouth, MA.

1000 AM Coffee Break; Exhibits open in Mandalay 2 and 3

1030 AM Hyperthermia Deaths of Children in Vehicles, Jan Null, San Francisco State University, Saratoga, CA.

1045 AM Astronomical Highlights, J. Kelly Beatty, *Sky & Telescope*, Cambridge, MA.

1100 AM Workshop: Ensemble Forecasts. Dr. David Bright, NOAA/NWS Storm Prediction Center, Norman, OK.

1200 NOON Lunch; Exhibits open in Mandalay 2 and 3

0130 PM Storm Based Warnings - A New Direction in the Warning Process, Richard Okulski (NWA Councilor), NOAA/NWS, Memphis, TN.

0145 PM Mesoscale Modeling for Dummies, Jason Kelley, WCTV-TV, Panama City, FL.

0200 PM Workshop: An In Depth Look at the GR2 Analyst, Les Lemon (NWA Past-President '01), Research Associate Meteorologist, CIMMS, NOAA/NWS Warning Decision Training Branch, Norman, OK

0300 PM Refreshment Break; Exhibits Open in Mandalay 2 and 3

0330 PM Workshop: Air Quality 101 - Tools and Resources, Diane Miller and Timothy Dye, Sonoma Technology, Inc., Pentaluma, CA, Scott Jackson and John White, U.S. Environmental Protection Agency, Research Triangle Park, NC.

0400 PM Google Earth Weather as a Back-Up to System Crashes and as a Great Resource for Web Site Content, Brad Panovich, WCNC-TV, Charlotte, NC

0415 PM America's Favorite Two Pastimes Team Up For Weather Education, Betsy Kling (NWA Membership & Marketing Chair), WKYC-TV, Cleveland, OH

0430 PM The Keancast: Kean University Media Initiative, Paul J. Croft (NWA Past-President '04), Kean University, Union, NJ.

0445 PM Taking Your Talents Online: Life Outside of Television, Rich Apuzzo, Consulting Meteorologist, *skyeyeweather.com*, Cincinnati, OH.

0500 PM NWA Seal Recertification Update, Jim Moore (NWA Seal Recertification Chair), Bryan Karrick, (NWA Councilor and Past NWA Seal Recertification Chair), and Mike Goldberg, Broadcast Meteorology Committee Chair.

0515 PM Dinner on your own; Exhibits open in Mandalay 2 and 3

0700 PM TAPE SWAP 2007 in Mandalay Ballroom A. Mike Goldberg, Broadcast Meteorology Committee chair, WTVR-TV, Richmond, VA and Larry Rice, Broadcast Seal Committee chair, KOB-TV, Albuquerque, NM. *Refreshments will be served after 0800 PM.*

1030 PM Annual Meeting scheduled activities close for the day.

Monday, 15 October 2007 Annual Meeting General Sessions

0800 AM Welcoming Remarks: NWA President, Alan E. Gerard, Meteorologist in Charge NOAA/NWS Forecast Office, Jackson, MS., and Randy Graham, NWA Annual Meeting Program Committee Chair, NOAA/NWS Salt Lake City, UT.

0815 AM Keynote Address. To be announced.

0845 AM Keynote Address. Kelly T. Redmond, Deputy Director and Regional Climatologist of the Western Regional Climate Center, located at the Desert Research Institute, Reno, NV.

0915 AM Keynote Address. Robert M. Tibi, Acting Director NOAA/National Weather Service Western Region, Salt Lake City, UT.

0930 AM Keynote Address. To be announced.

0945 AM NWA Announcements, NWA President, Alan E. Gerard, Meteorologist in Charge NOAA/NWS Forecast Office, Jackson, MS.

1000 AM Coffee Break; Exhibits open in Mandalay 2 and 3

SESSION 2 – Building Bridges from Forecast to Response I

Session Chair: To be announced.

1030 AM EF-Scale Progress Report, Daniel McCarthy (NWA Awards Committee Chair), NOAA/NWS Indianapolis, IN., Joseph Schaefer (NWA Past-President '98), NOAA/NWS Storm Prediction Center Director, and Jim LaDue, NOAA/NWS Warning Decision Training Branch, Norman, OK

1045 AM Integrating a Geographic Information System into Storm Assessment: The Southeast Alabama Tornado Outbreak of March 1, 2007, J. Parks Camp, NOAA/NWS, Tallahassee, FL.

1100 AM Surviving an EF5 Emergency in Greensburg, KS, William Monfredo, Brandon University, Brandon, Manitoba.

1115 AM The 24 February 2007 North Texas Dust Storm: An Impact Weather Event, Bernard N. Meisner, NOAA/NWS Southern Region Headquarters, Fort Worth, TX and Jessica A. Schultz, NOAA/NWS, Fort Worth, TX.

1130 AM Lunch on Your Own; Exhibits open in Mandalay 2 and 3

SESSION 3 – WEATHER ANALYSIS AND FORECASTING I

Session Chair: Matthew Bunkers (Assistant Editor - *NWA Electronic Journal of Operational Meteorology*), NOAA/NWS, Rapid City, SD.

0100 PM A Review of Significant Weather Events of 2007, Gregory Carbin, NOAA/NWS Storm Prediction Center, Norman, OK.

0130 PM Lessons Learned from CSTAR/COMET-Sponsored Research on Convective Storms and Heavy Rains, Lance F. Bosart, Daniel Keyser, and Matt Cote, State University of New York at Albany, Steve Weiss (NWA Past-President '05) and Russ Schneider, NOAA/NWS Storm Prediction Center, Norman, OK.

0145 PM Determining the Onset of Strong Westerlies during Persistent Mountain Wave Activity, Brian J. Billings and Vanda Grubisic, Desert Research Institute, Reno, NV.

0200 PM Heat Waves of the Western United States, John Abatzoglou and Laura Edwards, Desert Research Institute – Western Regional Climate Center, Reno, NV.

0215 PM The Use of Hovmoller Diagrams for Long Range Forecasting of Significant Weather Events, Robert J. Ricks, Jr., NOAA/NWS, New Orleans/Baton Rouge, LA.

0230 PM The Deep Southern United States Cyclone of 20-23 November 2006: An Anomalous Event, Jeffrey P. Craven, NOAA/NWS, Milwaukee/Sullivan, WI., and Richard Grumm, NOAA/NWS, State College, PA

0245 PM The Patterns Associated With Significant Heat Waves Across the United States. Richard Grumm and Ron Holmes, NOAA/NWS, State College PA., and Randall Graham, NOAA/NWS, Salt Lake City, UT

0300 PM Refreshment Break; Exhibits open in Mandalay 2 and 3

SESSION 4: Building Bridges from Forecast to Response II

Session Chair: Chuck Graves, Saint Louis University, St. Louis, MO.

0330 PM Weather and Society * Integrated Studies (WAS*IS): An Effort to Address Societal Impacts and Improve Response, Kevin Barjenbruch, NOAA/NWS, Salt Lake City, UT.

0345 PM The Community Collaborative Rain, Hail and Snow Network (CoCoRaHS): Filling in the Gaps with Timely Volunteer Precipitation Monitoring Across the Country, Henry Reges, Nolan Doesken, Rob Cifelli, and Julian Turner, CoCoRaHS/Colorado State University, Fort Collins, CO.

0400 PM An Examination of the Warning Decision Making Process, NOAA/NWS Outreach Efforts and Their Impact on the Tornado Events of 24 October 2001 and 10 November 2002, Jeff Logsdon, NOAA/NWS, Syracuse, IN.

SESSION 5: LIGHTNING

Session Chair – Bruce Thomas (NWA Councilor), Midland Radio Corp., Kansas City, MO.

0415 PM Nature's Probe of Severe Weather for Research and Operations, R. J. Blakeslee, NASA Marshall Space Flight Center, Huntsville, AL.

0430 PM Flow Regime Based Climatologies of Lightning Probabilities for Spaceports and Airports, William H. Bauman III, ENSCO, Inc./Applied Meteorology Unit, Cape Canaveral Air Force Station, FL., Matthew Volkmer, David Sharp, Scott Spratt, NOAA/ NWS, Melbourne, FL and Richard A. Lafosse, NOAA/NWS Spaceflight Meteorology Group, Johnson Space Center, Houston, TX.

0445 PM Lightning and Radar Reflectivity Signatures in Banded Snow Events, Amy E. Becker, Patrick S. Market (NWA Councilor), Chris J. Melick, and Brian P. Pettegrew, University of Missouri-Columbia, MO., Ronald L. Holle and Nicholas W. S. Demetriades, Vaisala, Inc, Tucson, AZ

0500 PM Updates in Lightning Safety, William P. Roeder, 45th Weather Squadron USAF, Patrick AFB, FL., and **Will the Myths Never Disappear?** Mary Ann Cooper, MD, University of Illinois at Chicago, Chicago, IL and William P. Roeder, 45th Weather Squadron USAF, Patrick AFB, FL.

0520 PM Icebreaker in Exhibit area and POSTER SESSION I

P1.1 The Next Generation of Weather Graphics Systems, Kenneth Reeves, Ryan Ayres, and Michael A. Steinberg, AccuWeather, Inc., State College, PA.

P1.2 American Meteorological Society's Certified Consulting Meteorologist Program, Stanley Marsh, American Meteorological Society, Boston, MA.

P1.3 The LRC (Lezak's Recurring Cycle), Gary Lezak, KSHB-TV, Kansas City, MO.

P1.4 Unusual and Unseasonable Tornadoes in Central Texas: 2005-2007, Lon Curtis, KWTX-TV, Waco, TX

P1.5 A Preliminary Verification of The National Hurricane Center Incremental Wind Probability Forecasts, Jaelyn A. Shafer, Florida Institute of Technology, Melbourne, FL., William P. Roeder, Michael McAleenan, and Katherine A. Winters, 45th Weather Squadron USAF, Patrick AFB, FL., and Steven M. Lazarus, Florida Institute of Technology, Melbourne, FL

P1.6 Examining Preconvective Heavy Rainfall Environments Utilizing Observational and Model Analysis Proximity Soundings, Michael Paddock and Charles Graves, Saint Louis University, St. Louis, MO., and Jason Martinelli, Creighton University, Omaha, NE.

P1.7 An Examination of Model Analysis Vertical Profile Biases for Preconvective Heavy Rainfall Environments, Michael Paddock and Charles Graves, Saint Louis University, St. Louis, MO., and Jason Martinelli, Creighton University, Omaha, NE.

P1.8 Impact of ENSO Phase on Storm Frequency, Severity, and Path for New Jersey, Anthony Dalbo and Paul J. Croft, Kean University, Union, NJ.

P1.9 A Comparison of Precipitable Water Measurements from Radiosondes, Ground-Based GPS Receivers, and GOES Sounders, Adele Lichtenberger, North Carolina State University, Raleigh, NC., and Steven Zubrick, NOAA/NWS, Sterling, VA.

P1.10 Water Level Climatology within the Chesapeake Bay and Tidal Potomac River, Kyle Tapely, The Pennsylvania State University, State College, PA., and Stephen J. Rogowski, NOAA/NWS, Sterling, VA.

P1.11 Use of Ensemble Products to Analyze the Mississippi Valley Severe Outbreak of March 2006, Kevin B. Lowrie, California University of Pennsylvania, California, PA.

P1.12 Integrating NJWXNET, WRF and GIS to Study NJ Mesoscale Weather Phenomena – the 1-3 August 2006 Heat Wave, Ryan Kelly and Shing Yoh, Kean University, Union, NJ.

P1.13 The Non-Blizzard Event of March 2001, Joshua Eachus and Chad Kauffman, California University of Pennsylvania, California, PA.

P1.14 Accuracy of a WRF Simulation of the 12 June 2001 Mesoscale Convective System, Brandon Hoving and Martin A. Baxter, Central Michigan University, Mount Pleasant, MI.

P1.15 A Comparison of the Radar Characteristics and Mesoscale Environments of Two Mesoscale Snowband Events in the Upper Midwest, Emily Eisenacher, Saint Louis University, Saint Louis, MO.

P1.16 Development of a Kentucky Snowfall Impact Scale, Ronnie Leeper, John M. Walker and Greg B. Goodrich, Western Kentucky University, Bowling Green, KY.

P1.17 Upslope and Lake Effect Snow Climatology along the Allegheny Front Range, Joe Wegman, State University of New York at Oswego, Oswego, NY., James E. Lee and Sarah A. Rogowski, NOAA/NWS, Sterling, VA.

P1.18 Stability Characteristics of Thundersnow Events: The Impact of Accounting for Ageostrophic Effects in the Growth Rate Parameter, Christopher J. Melick, Brian P. Pettegrew, Larry L. Smith, Amy E. Becker, Patrick S. Market and Anthony R. Lupo, University of Missouri-Columbia, Columbia, MO.

P1.19 A Diagnostic Analysis of Significant Cold-Season Elevated Thunderstorms, Erin Snavelly, Saint Louis University, St. Louis, MO, Scott Rochette SUNY Brockport, Brockport, NY., and Charles Graves, Saint Louis University, St. Louis, MO.

P1.20 A Climatology and Statistical Classification of Midwestern Snow Bands: A Process-Oriented Approach, Chad M. Gravelle and Charles E. Graves, Saint Louis University, St. Louis, MO., and Scott M. Rochette, SUNY Brockport, NY.

P1.21 Nowcasting Support of Research Aircraft Flights During T-REX, Brian J. Billings and Vanda Grubisic, Desert Research Institute, Reno, NV.

P1.22 The Role of Lower Mississippi Valley Elevated Convection in Snowfall Further North: 4-5 February 2005, David Anderson and Martin Baxter, Central Michigan University, Mt. Pleasant, MI, Philip Schumacher, NOAA/NWS, Sioux Falls, SD., and Joshua Boustead, NOAA/NWS, Omaha/Valley, NE.

P1.23 A Study of Trends and Variability of Low Flow Characteristics of the Reference Hydrometric Basin Network, Eghbal Ehsanzadeh and Kaz Adamowski, Department of Civil Engineering, University of Ottawa, Ottawa, Ontario, Canada.

0730 PM Annual Meeting scheduled activities close for the day. *Broadcasters' dinner will be scheduled by the NWA Broadcast Meteorology Committee.*

***Tuesday, 16 October 2007* Annual Meeting General Sessions**

SESSION 6: SEVERE WEATHER – PART I

Session Chair – Michael Vescio (NWA *National Weather Digest* Co-Editor), NOAA/NWS, Pendleton, OR.

0800 AM Improving Storm-Based Warnings, John T. Ferree (NWA Professional Development Committee Chair), NOAA/NWS/OCWWS, Norman, OK.

0815 AM The Future of Severe Weather Warnings - A Vision, John T. Ferree, NOAA/NWS/OCWWS, Norman, OK., David Andra, NOAA/NWS, Norman, OK., Michael Magsig and Liz Quotone NOAA/NWS Warning Decision Training Branch, Norman, OK, Kevin Scharfenberg, CIMMS/University of Oklahoma and NOAA/NSSL, Norman, OK, Greg Stumpf, CIMMS/NOAA/NWS Meteorological Development Laboratory, Norman, OK and Travis Smith, CIMMS/ University of Oklahoma and NOAA/NSSL, Norman, OK

0830 AM Large Event Venues and Severe Weather: A Mitigation Plan, Leslie R. Lemon (NWA Past-President '01), University of Oklahoma/CIMMS and NOAA/NWS Warning Decision Training Branch, Norman, OK., Roger Edwards, NOAA/NWS Storm Prediction Center, Norman, OK., Andy Bailey, NOAA/NWS, Pleasant Hill, MO., and Harold Hansen, International Association of Assembly Managers, Chicago, IL.

0845 AM The NOAA Hazardous Weather Testbed's Experimental Warning Program, David Andra and Mike Foster, NOAA/NWS, Norman, OK., Jerry Brotzge, University of Oklahoma, Donald W. Burgess, Pamela L. Heinselman, Kevin Manross, Kevin Scharfenberg, and Travis M. Smith, University of Oklahoma and NOAA/NSSL, John T. Ferree, NOAA/NWS/OCWWS, Kevin Kelleher, NOAA/NSSL, Liz Quotone, NOAA/NWS Warning Decision Training Branch, and Gregory J. Stumpf, CIMMS and NOAA/NWS Meteorological Development Laboratory, Norman, OK.

0900 AM The Greensburg, Kansas Tornado, Daniel McCarthy (NWA Awards Committee Chair), NOAA/NWS Indianapolis, IN., and Joseph Schaefer (NWA Past-President '98), NOAA/NWS Storm Prediction Center Director, Norman, OK.

0915 AM Severe Winds in the Absence of Deep Moist Convection Associated with the 13 May 2007 Northern High Plains Derecho, Jeffrey S. Evans, NOAA/NWS Storm Prediction Center, Norman, OK.

0930 AM A Review Severe Thunderstorm Forecasting Issues in the Western United States, Erik Pytlak, NOAA/NWS, Tucson, AZ, Donald Moore, NOAA/NWS, Billings, MT., and John Juskie, NOAA/ NWS, Sacramento, CA.

0945 AM An Unprecedented Late Season Severe Weather Event in Pennsylvania, John R. Scala (NWA President-Elect), WGAL-TV, Lancaster, PA., and Greg A. DeVoir and Richard H. Grumm, NOAA/ NWS, State College, PA

1000 AM *Coffee Break; Exhibits open in Mandalay 2 and 3*

SESSION 7: OBSERVATION SYSTEMS & ANALYSIS TOOLS
Session Chair: Erik Pytlak, NOAA/NWS, Tucson, AZ.

1030 AM A New Paradigm in Observing the Near Surface and Pavement: Clarus and Vehicle Infrastructure Integration, Andrew Stern, Noblis, Inc., Falls Church, VA., and Paul Pisano and Patrick Kennedy, Federal Highway Administration, Washington, DC.

1045 AM The Real-Time Mesoscale Analysis: Progress Toward A National Mesoscale Analysis of Record, Manuel Pondevca and Geoff DiMego, NOAA/NWS/NCEP, Camp Springs, MD., Lee Anderson, NOAA/NWS/Office of Science and Technology, Silver Spring, MD., Brad Colman, NOAA/NWS, Seattle, WA., John Horel and Dan Tyndall, University of Utah, Salt Lake City, UT.

1100 AM MesoWest: Monitoring High-Impact Weather Around the Nation, John Horel, University of Utah, Salt Lake City, UT.

1115 AM High Resolution Analysis and Nowcasting in Mountainous Terrain, Thomas Haiden, Central Institute for Meteorology and Geodynamics, Vienna, Austria.

1130 AM Addressing the Sippican Mark IIA Radiosonde Dry Bias at the NOAA/NWS Weather Forecast Office in Flagstaff, AZ, Dennis D. VanCleve Jr., and Brian Klimowski, NOAA/NWS, Flagstaff, AZ.

1145 AM Determining Flash Flood Risk in Aggregated Flash Flood Monitoring and Prediction Basins, Robert S. Davis, NOAA/ NWS, Pittsburgh, PA.

NOON Lunch on Your Own; Exhibits open in Mandalay 2 and 3

SESSION 8: JOINT SESSION on Remote Sensing Technologies and Applications to Improve Operational Meteorology - developed by the NWA Remote Sensing, Education, Professional Development and Weather Analysis & Forecasting Committees.

0130 PM Plenary Session - Opening Remarks, Ken Carey (NWA Remote Sensing Committee Chair), Noblis, Inc., Falls Church, VA.

0145 PM A Method for Surveying Urban Clear Islands in Radiation Fog and Low Stratus Cloud using Geostationary Satellite Imagery: Applications in the San Joaquin Valley of California, Jeffrey Underwood and Cassandra Hansen, University of Nevada, Reno, NV.

JOINT SESSION PART II

Session Chair: John Gagan (NWA Weather Analysis & Forecasting Committee Chair), NOAA/NWS, Springfield, MO.

0215 PM Lightning Detection and Location: An Overview of Methods, Tim Oram (NWA IT Committee Chair), NOAA/NWS Spaceflight Meteorology Group, Johnson Space Center, Houston, TX.

0230 PM Hydrometeorology Testbed in the American River Basin of Northern California, David Kingsmill, CIRES - University of Colorado and NOAA Earth System Research Laboratory, Boulder, CO., and Timothy Schneider, NOAA Earth System Research Laboratory, Boulder, CO.

0245 PM Integration of HMT-West SMART-R and X-Pol Data into the NOAA/NSSL Q2 System, Steve Vasiloff, NOAA/National Severe Storms Laboratory, Norman, OK., Carrie Langston and Jian Zhang, CIMMS, University of Oklahoma, Norman, OK., David P. Jorgenson, NOAA/NSSL, Norman, OK., and David E. Kingsmill, NOAA Earth System Research Laboratory, Boulder, CO.

0300 PM Refreshment Break; Exhibits open in Mandalay 2 and 3

0330 PM A Severe Weather Display System Incorporating Data from Handheld Mobile Devices, Michael Smith, Weather Data, Inc., Wichita, KS., and Ryan Ayres and Michael A. Steinberg, AccuWeather, Inc., State College, PA.

0345 PM The Hazard Mapping system: An Interactive Fire and Smoke Tool and it's use of Satellite Imagery for NOAA Air Quality Forecast Guidance, Jamie Kibler, Mark Ruminski and John Simko, NOAA/NESDIS/SSD, Camp Springs, MD.

0400 PM Afternoon Special Session Wrap-up: Q&A.

0415 PM – 0600 PM POSTER SESSION II

P2.1 An Analysis of the 24 February 2007 Southeast Arkansas Tornadoic Episode, Christopher C. Buonanno, John. A. Lewis III, and Amie L. Browne, NOAA/NWS, Little Rock, AR.

P2.2 Storm Prediction Center Perspectives of the 12 March 2006 Tornado Outbreak and Significant Southern Plains Wildfires, Jared L. Guyer and John A. Hart, NOAA/NWS Storm Prediction Center, Norman, OK.

P2.3 An Overview and Historical Perspective of the 19 May 2006 Severe Convective Windstorm in Northeast Oregon and Southeast Washington, Michael D. Vescio (NWA *National Weather Digest* Co-Editor) and Jon Mittelstadt, NOAA/NWS Pendleton, OR.

P2.4 Forecasting Supercell and Non Supercell Thunderstorm Anvils for NASA Space Shuttle Operations, Kurt M. Van Speybroeck, NOAA/NWS Spaceflight Meteorology Group, Johnson Space Center, TX., Matthew Bunkers (NWA *Electronic Journal* Assistant Editor), NOAA/NWS, Rapid City, SD, and Jon Zeitler (NWA *Electronic Journal* Editor), NOAA/NWS, Austin/San Antonio, TX.

P2.5 A Comparison of Upper Level Jets During Two Severe Weather Events Across the Midsouth, Michael Scotten and Kristin Scotten, NOAA/NWS, Memphis, TN.

P2.6 The Relationship Between Human Population Patterns and the Historical Tornado Database, Adam Thomas and Michael E. Brown (NWA Seal Testing Chair), Mississippi State University, Mississippi State, MS.

P2.7 Summer Season Convective Initiation in New Jersey Initial Analysis, Paul J. Croft (NWA Past-President '04), Melissa Rod, Mike Szczepanski, and Braden Ward, Kean University, Union, NJ.

P2.8 A Rare Early Fall Case of Non-Tropical Tornadoic Supercells in North Alabama, David Nadler, Brian Carcione, and Andy Kula, NOAA/NWS, Huntsville, AL.

P2.9 The Recent Increase in Southern Hemisphere Blocking, Anthony Lupo, University of Missouri, Columbia, MO., Joseph Clark, University of Illinois, Urbana, IL., Kristen Mihalka, University of Michigan, Ann Arbor, MI., and Kevin Puricelli and Brittany Perrin, University of Missouri, Columbia, MO.

P2.10 The Primary Forcing Trigger Mechanism Causing Climate/Weather Cycles, David Dilley, Global Weather Oscillations, Inc., Ocala, FL.

P2.11 Tornado and Severe Weather Climatology and Predictability by ENSO Phase in the North Central U.S. Barbara E. Mayes, NOAA/NWS, Davenport, IA., Jeffrey S. Boyne and Glenn R. Lussky, NOAA/NWS, La Crosse, WI., Craig Cogil, NOAA/NWS, Des Moines, IA., Richard S. Ryrholm, NOAA/NWS, Sioux Falls, SD., and Joshua M. Boustead, NOAA/NWS, Omaha/Valley, NE.

P2.12 A Tabletop First Guess Barometric-Density Displacement Storm Surge Model using EXCEL, Robert J. Ricks, Jr., NOAA/NWS, New Orleans/Baton Rouge, LA.

P2.13 A Gulf of Mexico Tropical Cyclone Climate Study Using ENSO and QBO as Determinants, Robert J. Ricks, Jr., and Robert Wagner, NOAA/NWS, New Orleans/Baton Rouge, LA., David F. Navarro, Janice M. Maldonado, and Myrna J. Santiago, University of Puerto Rico-Mayagüez, Mayagüez, PR.

P2.14 Baseline Instruments for the GOES-R Series, James Gurka, Timothy Schmit, Thomas Renkevans, NOAA/NESDIS, Greenbelt, MD

P2.15 NOAA/NWS WFO San Angelo's Support to Emergency Managers and First Responders During Non-Weather Related Hazards, Hector Guerrero (NWA Councilor), NOAA/NWS, San Angelo, TX.

P2.16 Technology & Research Integration, An Atmosphere of Learning for Students (TRIALS), Paul J. Croft (NWA Past-President '04), Kean University, Union, NJ.

P2.17 The Use of Total Lightning Data in Forecasting in Northern Alabama, Dr. Dennis E Buechler, University of Alabama in Huntsville, Huntsville, AL., Richard Blakeslee, NASA/MSFC Huntsville, AL., Steve Goodman, NOAA/NESDIS/STAR Camp Springs, MD., and Chris Darden and Patrick Gatlin, NOAA/NWS, Huntsville, AL.

P2.18 Update to the Lightning Probability Forecast Equations at Kennedy Space Center/Cape Canaveral Air Force Station, Florida, Winnie Lambert (NWA Councilor), ENSCO/Applied Meteorology Unit, Cape Canaveral AFS, FL., and William P. Roeder, 45th Weather Squadron USAF, Patrick AFB, FL.

P2.19 Lightning Kills, Play It Safe -- NOAA's Efforts to Educate the Public on the Dangers of Lightning, John S. Jensenius, Jr., NOAA/NWS, Gray, ME.

P2.20 A Constitution for Personal Flood Safety, Jon Zeitler (NWA *Electronic Journal* Editor), NOAA/NWS, Austin/San Antonio, TX.

P2.21 The Tennessee Turn Around, Don't Drown (TADD) Project, Tim Troutman, Jason Elliott and John M. Coyne, NOAA/NWS, Huntsville, AL.

P2.22 Preparing for the Storm - A Hazardous Weather Guide for Texas Schools, Gary R. Woodall, NOAA/NWS, Fort Worth, TX., Steve Vaughn, Waco/McLennan County Office of Emergency Management and Dale Caffey, Waco Independent School District, Waco, TX.

P2.23 The Influence of Elevated Convection on the Warm Moist Conveyor Belt during the 3-5 January 2005 Central Plains Winter Storm, Joshua Boustead, NOAA/NWS, Omaha/Valley, NE., Dr. Martin Baxter, Dave Anderson, Central Michigan University, Mt. Pleasant, MI., and Philip Schumacher, NOAA/NWS, Sioux Falls, SD.

P2.24 A Case Study Examination of the Effect of Convection on Winter Precipitation, Philip Schumacher, NOAA/NWS, Sioux Falls, SD., Joshua Boustead, NOAA/NWS, Omaha/Valley, NE., and Dr. Martin Baxter, Central Michigan University, Mt. Pleasant, MI.

P2.25 The Role of Lower Mississippi Valley Elevated Convection in Snowfall Further North: 4-5 February 2005, David Anderson and Martin Baxter, Central Michigan University, Mt. Pleasant, MI., Philip Schumacher, NOAA/NWS, Sioux Falls, SD., and Joshua Boustead, NOAA/NWS, Omaha/Valley, NE.

P2.26 NOAA's Role in the Global Precipitation Measurement (GPM) Mission, Ralph R. Ferraro (NWA Councilor), Bob Kuligowski, NOAA/NESDIS University of Maryland, College Park, MD., John Janowiak, NOAA/NWS, Camp Springs, MD., and Christopher Williams, NOAA/OAR Boulder, CO.

P2.27 A Blended Total Precipitable Water (TPW) Product for the Analysis and Forecast of Weather Hazards, Sheldon J. Kusselson, NOAA/NESDIS/OSDPD/SSD/Satellite Analysis Branch, Camp Springs, MD., Stanley Q. Kidder, John Forsythe and Andrew Jones, CIRA/Colorado State University, Fort Collins, CO., and Limin Zhao, NOAA/NESDIS/OSDPD/SSD/Satellite Products Branch, Camp Springs, MD.

P2.28 Lessons Learned from Using the Multisensor Precipitation Estimator Processing System, Gregory J. Story, NOAA/NWS, Fort Worth, TX.

P2.29 The Truckee River Flood Threat Detection Plan: Toward a Unified Response to NWS Flood Forecasts by County, City and University Emergency Personnel, Gary E. Barbato, NOAA/NWS, Reno, NV., Ed Evans, Washoe County Department of Water Resources, Reno, NV., Aaron Kenneston, Washoe County Division of Emergency Management, Reno, NV., Paul Urban, Truckee River Flood Project, Reno, NV., and Gary Dunn, City of Sparks Emergency Manager, Sparks, NV.

P2.30 The Relationship between Flash Flood Warnings and Fatalities, Walker Ashley and Sharon Ashley, Northern Illinois University, DeKalb, IL.

P2.31 Integrating Military Fine-scale Weather Technology to Fulfill the Wildland Firefighting Mission: An Operational Concept, David Knapp (NWA Past-President '06), US Army Research Laboratory, White Sands Missile Range, NM., and Bob Roth, US Forest Service, Missoula, MT.

0600 PM NWA Annual Meeting scheduled activities close for the day and the exhibit period ends; dinner on your own.

0630 PM NWA Council and Committee Chairs dinner/business meeting.

Wednesday, 17 October 2007 Annual Meeting General Sessions

SESSION 8 Continued: Joint Session on Remote Sensing Technologies and Applications to Improve Operational Meteorology - developed by the NWA Remote Sensing, Education, Professional Development and Weather Analysis & Forecasting Committees.

JOINT SESSION PART III

Session Chair: John T. Ferree (NWA Professional Development Committee Chair), NOAA/NWS/OCWWS, Norman, OK.

0800 AM Forecasting Lee-Side Precipitation Using Radar and Satellite Signatures of the Narrow Cold-Frontal Rainband, Rhett Milne, NOAA/NWS, Reno, NV.

0815 AM Transitioning Satellite Imagery from Research to Operations, Jordan J. Gerth (2007 NWA METSAT Applications Award Grant Winner) (2007 NWA METSAT Applications Award Grant Winner), University of Wisconsin at Madison, Madison, WI.

0830 AM Warnings of Cloud-to-Ground Lightning Hazard Based on Combinations of Lightning Detection and Radar Information, Martin J. Murphy and Ronald L. Holle, Vaisala, Inc., Tucson, AZ.

0845 AM The Use of Several Unique Remote Sensing Tools and Techniques in Forecasts Made For the Central Tennessee Valley, David Nadler, Brian Carcione and Andy Kula, NOAA/NWS, Huntsville, AL.

0900 AM Personal Weather Advisor: Providing Drivers with In-Vehicle, Real-time Weather Awareness, Dan Gallagher, Bob Dreiserwerd and Bob Baron, Baron Services, Inc., Huntsville, AL.

JOINT SESSION PART IV

Session Chairs: Eleanor Vallier-Talbot, NOAA/NWS, Taunton, MA., and Faith Borden, NOAA/NWS, Las Vegas, NV, (NWA Education Committee).

0915 AM Advanced Fire Weather Training Activities by COMET, Elizabeth Mulvihill Page (NWA Secretary), UCAR/COMET, Greensboro, NC.

0930 AM Satellite Data Capabilities and Their Application to NWS Environmental Support Challenges, Dr. Kevin Schrab and Bill Sjoberg, NOAA/NWS Office of Science and Technology, Silver Spring, MD.

0945 AM Morning Session Wrap-up: Q&A.

1000 AM *Coffee Break*

JOINT SESSION PART V

1030 AM Panel Discussion Moderated by Pablo Santos, NOAA/ NWS, Miami, FL., and Thomas Lee, Naval Research Laboratory, Monterey, CA (NWA Remote Sensing Committee).

Will There Be Another QuikSCAT? Zorana Jelenak NOAA/ NESDIS/STAR-UCAR, Camp Springs, MD., and Paul S. Chang, NOAA/NESDIS/STAR, Camp Springs, MD.

The Operational Transition of Satellite Ocean Surface Vector Wind Data at the NOAA/NWS National Centers for Environmental Prediction, Michael J. Brennan, NOAA/NWS/ NCEP/HPC, Camp Springs, MD.

JOINT SESSION PART VI

THE FUTURE OF OPERATIONAL REMOTE SENSING

Session Chair: Ralph R. Ferraro (NWA Councilor; Remote Sensing Committee), NOAA/NESDIS, Univ. of Maryland at College Park, MD.

1115 AM The Future of Operational Satellite Imagers: GOES-R and NPOESS, Thomas F. Lee, F. Joseph Turk, Jeffrey D. Hawkins, Stephen D. Miller and Arunas Kuciauskas, Naval Research Laboratory, Monterey, CA.

1130 AM To be announced.

1145 AM Joint Session Summary

NOON NWA Annual Awards Luncheon

NOTE: Concurrent Sessions between 0200 PM and 0400 PM.

SESSION 9 – AIR QUALITY (Casino Ballroom)

0200 PM – 0400 PM Air Quality 101: An Introduction to Air Quality and Useful Tools and Resources, Dianne S. Miller and Timothy S. Dye, Sonoma Technology, Inc., Pentaluma, CA, Scott Jackson and John White, U.S. Environmental Protection Agency, Research Triangle Park, NC.

SESSION 10 – WEATHER ANALYSIS AND FORECASTING II - WINTER WEATHER

Session Chair: John R. Scala (NWA President-Elect), WGAL-TV, Lancaster, PA.

0200 PM Variability of the Influence of Convection on Conveyor Belts: Development of Conceptual Models and Forecast Methodologies, Martin Baxter and David Anderson, Central Michigan University, Mt. Pleasant, MI., Phil Schumacher, NOAA/NWS, Sioux Falls, SD., and Joshua Boustead, NOAA/NWS, Omaha/Valley, NE.

0215 PM The 2007 Valentine's Week Sleet Storm in Eastern Pennsylvania: Forecasts and Responses, Elliot Abrams, AccuWeather, Inc., State College, PA.

0230 PM Impacts of the 12-14 January 2007 Ice Storm on the Missouri Ozarks, John P. Gagan (NWA Weather Analysis & Forecasting Committee Chair) and Megan Terry, NOAA/NWS, Springfield, MO.

0245 PM Winter Season Fog: A GIS Approach to Interpretation, Braden Ward and Paul J. Croft (NWA Past-President '04), Kean University, Union, NJ.

0300 PM Thermal Trough induced Coastal Jet Winds: A Comparative Investigation of Scatterometer, Buoy winds and Model Wind fields over a two-year period, Sven Nelaimischkies and Larry Smith, NOAA/NWS, Medford, OR.

0315 PM Spontaneous Gravity Wave Generation and its Operational Forecasting Implications, Donald W. McCann, McCann Aviation Weather Research, Inc., Overland Park, KS., John A. Knox, University of Georgia, Athens, GA., and Paul D. Williams, Department of Meteorology, University of Reading, Reading, UK.

SESSION 11 - ONLINE APPLICATIONS AND TOOLS / PROFESSIONAL DEVELOPMENT

Session Chair: Chris Smallcomb, NOAA/NWS, Reno, NV (NWA Annual Meeting Program Committee).

0330 PM Flood Forecasting Tools for Landfalling Hurricanes, David Reed, NOAA/NWS Lower Mississippi River Forecast Center, Slidell, LA.

0345 PM The National Mosaic and QPE Project at NSSL, Jian Zhang, CIMMS, University of Oklahoma, Norman, OK, and Ken Howard, NOAA/National Severe Storms Lab, Norman, OK.

0400 PM A COMET Interactive Skew-T, Log-P Training Module, Gregory Byrd (NWA Councilor), Alan Bol, and Arlene Laing, UCAR/COMET, Boulder, CO.

0415 PM An Internet Site for Professional Meteorologists, Kenneth Reeves, James T. Candor, and Michael A. Steinberg, AccuWeather, Inc., State College, PA.

0430 PM NWA IT Committee: Projects, Progress, and Plans.

Tim Oram (NWA IT Committee Chair), Mike Coyne, Darone Jones, Steve Listemaa, Brad Herold, and Dr. George Young

0445 PM Refreshment Break and POSTER SESSION III

P3.1 Experimental Probabilistic Warning Guidance for Severe Convective Weather Threats, Travis M. Smith, Donald W. Burgess, Kevin L. Manross, Kiel Ortega, and Kevin Scharfenberg, University of Oklahoma and NOAA/NSSL, David Andra, NOAA/NWS, James G. LaDue, Les Lemon, and Michael Magsig, NOAA/NWS Warning Decision Training Branch, Gregory J. Stumpf, NOAA/NWS/MDL, Norman, OK., Dan J. Miller, NOAA/NWS, Duluth, MN., Steve Nelson, NOAA/NWS, Peachtree City, GA., and David W. Sharp, NOAA/NWS, Melbourne, FL.

P3.2 Overview of the Tornado Outbreak of 1-2 March 2007 in the National Weather Service Tallahassee Forecast Area, J. Parks Camp, Andrew I. Watson, Bryan A. Mroczka, Jeffrey A. Fournier, and Robert C. Goree, NOAA/NWS, Tallahassee, FL.

P3.3 Case Study of the 4 March 2004 Quasi-Linear Convective System, Scott Overpeck, NOAA/NWS, Houston, TX.

P3.4 Georgia Tornadoes of 1 March 2007: Warning and Response, Steven Nelson, Trisha Palmer, and Kent Frantz NOAA/NWS, Peachtree City, GA., and Robby Westbrook, Office of Emergency Management, Cherokee County, GA.

P3.5 A Detailed Single-Doppler Radar Analysis of Merging Supercells, Jason Martinelli, Creighton University, Omaha, NE., Fred Glass, NOAA/NWS, Saint Louis, MO., and Andrew Elliott, Creighton University, Omaha, NE.

P3.6 Forecasting "Dry" Thunderstorms in the West Using Tropopause Maps and Upper-Level Lapse Rates, James Wallmann, NOAA/NWS, Reno, NV.

P3.7 The Memphis Tornado Project, Jonathan L. Howell, Scott J. McNeil, Kati R. McNeil, Todd A. Beal, and Chris C. Duke, NOAA/NWS, Memphis, TN.

P3.8 The Convective Hazards Assessment Program (CHAP): Revised Ricks Index and Precipitation Calculator, Robert J. Ricks, Jr., NOAA/NWS, New Orleans/Baton Rouge, LA., and Shawn O'Neal, unaffiliated

P3.9 Primary Forcing Trigger Mechanism (PFM): The Trigger Mechanism that Controls Recurring Cycles of the El Niño, Hurricane Landfalls and Global Warming, David Dilley, Global Weather Oscillations, Inc., Ocala, FL.

P3.10 Training for Weather Support to Spaceflight Operations, Tim Oram and Richard Lafosse, NOAA/NWS, Spaceflight Meteorology Group, Johnson Space Center, Houston, TX.

P3.11 A Tour of the New NWA Web site, Michael Coyne, NOAA/NWS, Huntsville, AL., Tim Oram, NOAA/NWS Spaceflight Meteorology Group, Houston, TX., Darone Jones, NOAA/NWS Birmingham, AL., and Steve Listemaa, NOAA/NWS, Sterling, VA.

P3.12 The New GIS Services from the NWS, Keith Stellman and Paul Kirkwood, NOAA/NWS Southern Region HQ, Fort Worth, TX., and Ira Graffman, NOAA/NWS HQ, Silver Spring, MD.

P3.13 SevereClear: A New Situational Awareness Display for NOAA/NWS Offices, Michael Coyne, Jason Burks, Brian Carcione and Greg Mahala, NOAA/NWS, Huntsville, AL.

P3.14 Graphical Impact Weather Communications, Mark A. Fox, NOAA/NWS Southern Region HQ and Jessica A. Schultz, NOAA/NWS, Fort Worth, TX.

P3.15 Creating Interactive Graphical Overlays in the Advanced Weather Interactive Processing System Using Shapefiles and DGM Files, Joe H. Barrett III, NASA, Applied Meteorology Unit, Cape Canaveral AFS, FL., Richard Lafosse, Doris Hood, and Brian Hoeth, NOAA/NWS Spaceflight Meteorology Group, Johnson Space Center, Houston, TX.

P3.16 Local WRF Modeling Efforts at NOAA/NWS Forecast Office Sterling, VA, Steven Zubrick (NWA Treasurer), Steven A. Listemaa, and Stephen J. Rogowski, NOAA/NWS, Sterling, VA.

P3.17 How Do You Know Whether to Believe the Model Forecast? Unmasking the Black Box, Stephen D. Jascourt, UCAR/COMET, Silver Spring, MD., William R. Bua, UCAR/COMET, Camp Springs, MD., and Gregory Byrd (NWA Councilor), UCAR/COMET, Boulder, CO.

P3.18 The March 28, 2007 dryline event: A case study, Anthony Lupo, George Limpert, Ali Koleiny, Justin Glisan, and Jamie Moker, University of Missouri-Columbia, Columbia, MO.

P3.19 A Comparative Study to Quantify the Chaotic Behavior in Numerical Models, Anthony Lupo, Amy Schnetzler, Patrick Market, Justin Glisan and Brian Pettegrew, University of Missouri-Columbia, Columbia, MO.

P3.20 The "Great Lakes Effect" on Major League Baseball, Dale Dockus, FedEx Express, Memphis, TN.

P3.21 Climatology of Retired Atlantic Basin Hurricane Names, Richard W. Dixon (NWA Specialized Operational Services Committee Co-Chair), Texas State University, San Marcos, TX.

P3.22 Super Typhoon Pongsona 5th Anniversary, Timothy P. Hendricks, NOAA/NWS, Barrigada, Guam.

P3.23 Kean University's Weather Hazard Education & Research for Ecosystems of Urban Relevance in NJ (Kean University's WHERE UR in New Jersey!), Paul J. Croft (NWA Past-President '04), Kean University, Union, NJ.

P3.24 Education in Meteorology: Professional Operational Work to Experience Reality through Instruments & Technology (EM-POWER-IT!), Paul J. Croft (NWA Past-President '04), Kean University, Union, NJ

P3.25 An Analysis of the Forcing Mechanisms Responsible for the 11-12 February 2006 NYC Snowstorm, Scott M. Rochette (NWA Councilor) and Steven J. Earle, SUNY College at Brockport, Brockport, NY., and Chad M. Gravelle, Saint Louis University, Saint Louis, MO.

P3.26 Forecasting the Development and Evolution of Post-Frontal Convective Snowbands in Northwest Flow across Central Wyoming, Todd W. Baker, Christopher N. Jones and Brett E. McDonald, NOAA/NWS, Riverton, WY.

P3.27 Lightning Characteristics of a Recent Midwestern Heavy Snow Event, Patrick S. Market (NWA Councilor), Brian P. Pettegrew, Patrick E. Guinan, Chris J. Melick, Amy E. Becker, Anthony R. Lupo and Neil I. Fox University Missouri-Columbia, Columbia, MO., and Ronald L. Holle and Nicholas W. S. Demetriades, Vaisala, Inc., Tucson, AZ.

P3.28 TAF based Tactical Decision Aid, Eric Avila, NOAA/NWS/CWSU, Houston, TX.

P3.29 CrIS Radiance Simulations in Preparation for Near Real-Time Data Distribution, Haibing Sun and Kexin Zhang, QSS Group, Inc., Camp Springs, MD., Walter Wolf and C. Barnet, NOAA/NESDIS, Camp Springs, MD., Lihang Zhou, QSS Group, Inc., Camp Springs, MD., M. Goldberg, NOAA/NESDIS/ORA, Camp Springs, MD., and T. King, QSS Group, Inc., Lanham, MD.

P3.30 Inadvertent Weather Modification in Phoenix, AZ, Paul Iniguez, NOAA/NWS, Phoenix, AZ.

P3.31 Attenuation of Ultraviolet Radiation by Atmospheric Aerosols, David Hamrick, NOAA/NWS, Flowood, MS.

P3.32 "The Weather Made Me Do It:": The Evolution of Weather Data as Evidence and Alibi, Marsha L. Baum, University of New Mexico School of Law, Albuquerque, NM.

0630 PM Annual Meeting scheduled activities end; Dinner on your own

0630 PM NWA Council dinner and business meeting

Thursday, 18 October 2007 Annual Meeting General Sessions

SESSION 12 - NUMERICAL WEATHER PREDICTION

Session Chair: Martin Baxter, Central Michigan University, Mount Pleasant, MI.

0800 AM Model Simulations of Extreme Orographic Precipitation in the Sierra Nevada during the New Year s Eve Flood of 2005, James Wallman and Rhett Milne, NOAA/NWS, Reno, NV., Phillip Marzette, Michael Kaplan and Chris Adaniya, Desert Research Institute, Reno, NV.

0815 AM Use of High Resolution WRF-ARW Output at a National Weather Service Forecast Office: The 21 July 2002 & 9 August 2005 Upper Michigan Bow Echo Events, Tom Hultquist, NOAA/NWS, Marquette, MI.

0830 AM Capturing Inversions in Mountainous Terrain with Numerical Weather Models, Don Morton, Department of Computer Science, University of Montana, Missoula, MT., and Eugene Petrescu, NOAA/NWS, Missoula, MT.

0845 AM Impact of MODIS High-Resolution Sea-Surface Temperatures on WRF Forecasts at NOAA/NWS Miami, FL.

Jonathon L. Case, ENSCO Inc./SPoRT, Huntsville, AL., Katherine M. LaCasse, Univ. of Alabama at Huntsville, Scott R. Dembek, USRA, Huntsville, AL., Pablo Santos, NOAA/NWS, Miami, FL., and William M. Lapenta, NASA Marshall Spaceflight Center, Huntsville, AL.

0900 AM Using Short Range Ensemble Forecasts with Deterministic Model Guidance to Identify Severe Weather Threats.

Josh Korotky, NOAA/NWS, Pittsburgh, PA.

0915 AM Integrating NJWXNET, WRF and GIS to Study NJ Mesoscale Weather Phenomena, Ryan Kelly and Shing Yoh, Kean University, Union, NJ.

0930 AM NOAA Hazardous Weather Testbed Spring Experiment 2007: Exploration of a Storm Scale Ensemble Forecast System for the Prediction of Severe Convective Weather Steven J. Weiss (NWA Past-President '05), NOAA/NWS/NCEP/Storm Prediction Center, Norman, OK., John S. Kain, NOAA/OAR/National Severe Storms Laboratory, Norman, OK., David R. Bright, Jason J. Levit, and Gregory W. Carbin NOAA/NWS/NCEP/Storm Prediction Center, Norman, OK., Michael C. Coniglio, NOAA/OAR/National Severe Storms Laboratory, Norman, OK., Kelvin K. Droegemeier, Ming Xue, Fanyou Kong, Kevin W. Thomas, and Daniel Weber, Center for Analysis and Prediction of Storms, Univ. of Oklahoma, Norman, OK., Jun Du, NOAA/NWS/NCEP/Environmental Modeling Center, Washington, DC, Morris L. Weisman, National Center for Atmospheric Research, Boulder, CO

0945 AM Coffee Break

SESSION 13 - CLIMATOLOGY/VERIFICATION CONCEPTS

Session Chair: Dr. Richard W. Dixon (NWA Specialized Operational Services Committee Co-chair), Texas State Univ., San Marcos, TX.

1015 AM A Few Ideas on Detrending the SPC Severe Weather Database, John A. Hart, Gregory Carbin, and Joseph Schaefer (NWA Past-President '98), NOAA/NWS Storm Prediction Center, Norman, OK, and Harold Brooks, NOAA/OAR/NSSL, Norman, OK.

1030 AM A Distributions-Oriented Approach to Forecast Verification of SPC Probability Convective Outlooks from 2001-2005. Casey Crosbie, NOAA/NWS/SPC, Norman, OK.

1045 AM A Synoptic Climatology of Tornado Events in Eastern Ohio and Western Pennsylvania using the Miller s Guide [TR-200] Classification Scheme, Jonathan A. Jennings, California University of Pennsylvania, California, PA.

1100 AM Object Oriented and Traditional Precipitation Verification of the 2004-2005 SPC/NSSL Spring Programs, Adam Pasch and Charles E. Graves, Saint Louis University, St. Louis, MO.

1115 AM Current and Future Tools to Improve the Verification of Severe Weather Events, Travis Smith and Angelyn Kolodziej, U. of Oklahoma and NOAA/NSSL, James G. LaDue, Michael A. Magsig and Ed Mahoney, NOAA/NWS/WDTB, Kevin Manross, Kiel Ortega, and Kevin Scharfenberg, U. of Oklahoma and NOAA/NSSL, Norman, OK., and Albert Pietrycha, NOAA/NWS, Goodland, KS.

1130 AM Using Analysis Uncertainty Estimates from the Real-Time Mesoscale Analysis in the Verification of Grid-Based Forecasts, David Myrick, NOAA/NWS Western Region, Scientific Services Division, Salt Lake City, UT.

1145 AM Lunch on Your Own

SESSION 14 – RADAR

Session Chair: Josh Korotky, NOAA/NWS, Pittsburgh, PA

0115 PM Greensburg, Kansas: Did the WSR-88D Resolve a Very Large Tornado? Leslie R. Lemon (NWA Past-President '01), University of Oklahoma/CIMMS, NOAA/NWS Warning Decision Training Branch, Norman, OK., James G. LaDue, NOAA/NWS Warning Decision Training Branch, Norman, OK., and Larry Ruthi and Mike Umscheid, NOAA/NWS, Dodge City, KS.

0130 PM Developing Site-Specific Scanning Strategies for WSR-88Ds: Important Considerations, Rodger A. Brown (NWA Publications Committee Chair), NOAA/OAR National Severe Storms Laboratory, Norman, OK and Randy M. Steadham, NOAA/NWS NEXRAD Radar Operations Center, Norman, OK.

0145 PM Comparison of Storm Evolution Characteristics: The NWRT PAR and WSR-88D, Pamela Heinselmann, David Priegnitz, Kevin Manross, Travis Smith, University of Oklahoma/CIMMS, Norman, OK., and David Andra, NOAA/NWS, Norman, OK.

0200 PM Performance of Four Terminal Doppler Weather Radars during a Severe Weather Episode on 28 September 2006 across Central Maryland, Brandon P. Peloquin and Stephen J. Rogowski, NOAA/NWS, Sterling, VA.

0215 PM Identifying Large Midlevel Updrafts with Spectrum Width. Matthew J. Bunkers, NOAA/NWS, Rapid City, SD., and Leslie R. Lemon, University of Oklahoma/CIMMS, NOAA/NWS Warning Decision Training Branch, Norman, OK.

0230 PM Hail Size Forecast Verification across the Intermountain West Using a Combination of Radar Reflectivity Heights and Derived Products, Michael Seaman and Monica Traphagan, NOAA/NWS, Salt Lake City, UT.

0245 PM Results of the Four-dimensional Stormcell Investigator NWS WFO Alpha Tests, Greg Stumpf, CIMMS/NOAA/NWS Meteorological Development Laboratory, Norman, OK.

0300 PM Refreshment Break

SESSION 15 - SEVERE WEATHER II

Session Chair: Greg Carbin (NWA Annual Meeting Program Committee), NOAA/NWS Storm Prediction Center, Norman, OK.

0315 PM Updated Tornado Safety Preparedness for Schools, Timothy Troutman, Holly Allen, John M. Coyne and David Nadler, NOAA/NWS, Huntsville, AL.

0330 PM Flash Flood Patterns in Western Nevada and Eastern California, Brian Brong, NOAA/NWS, Reno, NV.

0345 PM Warm-Season Lake-/Sea-Breeze Severe Weather in the Northeast, Patrick Wilson, Lance F. Bosart, and Daniel Keyser, State University of New York at Albany, and Thomas A. Wasula, NOAA/NWS, Albany, NY.

0400 PM The Collin/Grayson County, Texas Tornadoic Supercell of 9 May 2006, Gary R. Woodall, NOAA/NWS, Fort Worth, TX, Ted Best, Collin County Amateur Radio Emergency Services

0415 PM A Case Study of Nonmesocyclonic Tornadoogenesis along Convergence Boundaries: West Texas 23 March 2007, Mark Conder and Todd Lindley, NOAA/NWS, Lubbock, TX., James Caruso NOAA/NWS, Wichita, KS., Jon Davies, Private Meteorologist, Wichita, KS., Wesley Burgett, Texas Tech University, Lubbock, TX.

0430 PM A Multi-Scale Examination of the 1 March 2007 Millers Ferry Alabama EF-4 Tornado-Producing Mesocyclone, Jeffrey Medlin, NOAA/NWS, Mobile, AL.

0445 PM Closing remarks.

NWA President Alan E. Gerard, NOAA/NWS, Jackson, MS and John R. Scala, NWA President-Elect, WGAL-TV, Lancaster, PA.

0500 PM NWA 32nd Annual Meeting Adjourns.

IMPORTANT DATES AND EVENTS

12 September – Reserve your room at the Annual Meeting Hotel before 12 Sep for NWA discount rates (pg. 2)

5 October – Preregister for the NWA Annual Meeting before 5 Oct at discount rates (pg. 2)

13-18 October – 32nd NWA Annual Meeting, Reno, NV

Also, check the Web site: www.nwas.org/meetings/meetings.html

NWA Newsletter (ISSN 0271-1044)

Editor: Janice Bunting

Publisher: Steve Harned, Executive Director

Published monthly by the National Weather Association
228 West Millbrook Road, Raleigh, NC (USA) 27609-4304

Tel/FAX: (919) 845-1546; e-mail: exdir@nwas.org

Web site: www.nwas.org

Submit newsletter items directly to: Editor NWA Newsletter, at nwanewsletter@nwas.org or to the NWA office. Material received by the 23rd will be considered for the following month's issue.

Members receive the monthly NWA Newsletter and *National Weather Digest* as part of their regular, student or corporate membership privileges. Newsletter subscriptions are available at \$18.00 per year plus extra shipping costs outside USA. Single copies are \$1.50.

Contact the NWA Executive Director's office (listed above) with **address changes** by phone, regular mail or e-mail.

NATIONAL WEATHER ASSOCIATION

228 W MILLBROOK RD

RALEIGH NC 27609-4304

*Supporting and Promoting Excellence in Operational
Meteorology and Related Activities since 1975*